

INSTALLATION INSTRUCTIONS FOR INSTALLING A 120 MILLIMETER UPPER CIGARETTE MAGAZINE CONVERSION KIT IN A NATIONAL VENDORS[®], CROWN LINE[®], SERIES OR CABARET 222 OR CROWN SEVENTY TWO[®], SERIES OR GOLDEN FURNITURE LINE 22M-72 MANUAL CIGARETTE MERCHANDISER

Read these instructions carefully and thoroughly before installing this Kit. Retain these instructions for part number and installation information.

IMPORTANT

THE REPLACEMENT UPPER MAGAZINE ASSEMBLY, INCLUDED IN THE KIT, CAN BE INSTALLED IN ANY 222 OR 22M-72 MERCHANDISER BY THE USE OF THIS KIT, HOWEVER, THE CAPABILITY OF VENDING 120 mm CIGARETTE PACKS FROM THE REPLACEMENT UPPER MAGAZINE ASSEMBLY IS LIMITED TO THOSE 222 AND 22M-72 MERCHANDISERS BUILT SINCE THE LOWER MAGAZINE, WITH 100 mm CAPABILITY, WENT INTO PRODUCTION. THIS INCLUDES ALL CABARET 222 MERCHANDISERS, ALL SERIES 222 MERCHANDISERS SERIAL NUMBER 3007082 AND UP, ALL GOLDEN FURNITURE LINE 22M-72 MERCHANDISERS AND ALL SERIES 22M-72 MERCHANDISERS SERIAL NUMBER 52716 AND UP.

Kit, Part Number 222-7109, contains the following parts:

| Part Number | Description | Quantity |
|-------------|--------------------------------|----------|
| 222-7100 | Upper Magazine Assembly | 1 |
| 222-7102 | Upper Rear Cross Plate Drawer | 1 |
| 222-7108 | Pack Stop Angle Spring | 1 |
| 222-7103 | Upper Pack Spacer | 4 |
| 222-6660 | Upper Delivery Chute Assembly | 1 |
| 9900-036 | No.10-32 x 9/32 RHS Screw W/LW | 4 |
| 222-6605 | Upper Delivery Chute Stud | 2 |
| 222-7110 | Installation Instructions | 1 |
| | * * * | |

NOTE

Retain the attaching hardware removed during the PARTS REMOVAL section for use during the INSTALLATION OF THE KIT section.

TO INSTALL THE KIT

A. PARTS REMOVAL

1. Disconnect the Merchandisers' electrical Service Cord from the wall receptacle.
2. Unlock and open the Cabinet Door.

NOTE

Step 3 applies only to Merchandisers equipped with a Book Match Assembly.

3. Depress and hold depressed the red Book Match Assembly Latch at the lower left front of the Delivery Mechanism; then pull the Book Match Magazine out of the Delivery Mechanism.

4. Remove two No.10-32 x 3/8 Round Head Screws and the Upper Cigarette Magazine Assembly from the Merchandiser.
5. Remove two No.10-32 x 3/8 Round Head Screws and the Lower Cigarette Magazine Assembly from the Merchandiser.

WARNING

The Delivery Mechanism is a heavy unit. More than one person will be required to remove the Delivery Mechanism from the Merchandiser.

6. Remove the Delivery Mechanism from the Merchandiser.
7. Remove four No.8-32 x 1/4 Round Head Self Tapping Screws and the Upper Rear Cross Plate Drawer from the Delivery Mechanism. See Figure 1.
8. Remove the Pack Stop Angle Stud, No.8-32 Split Lockwasher and the Pack Stop Angle and Pack Stop Angle Spring from the Delivery Mechanism. See Figure 2.

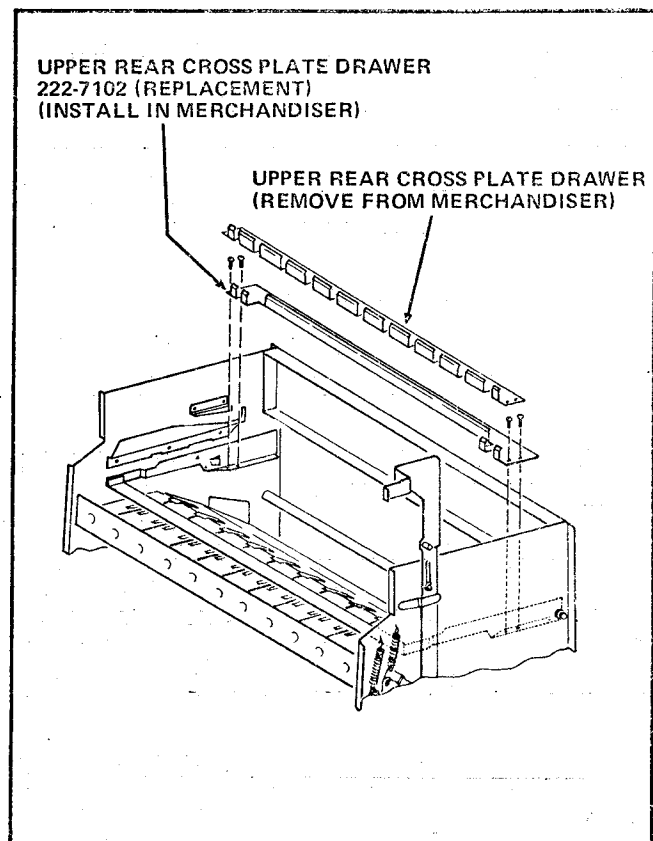


FIGURE 1

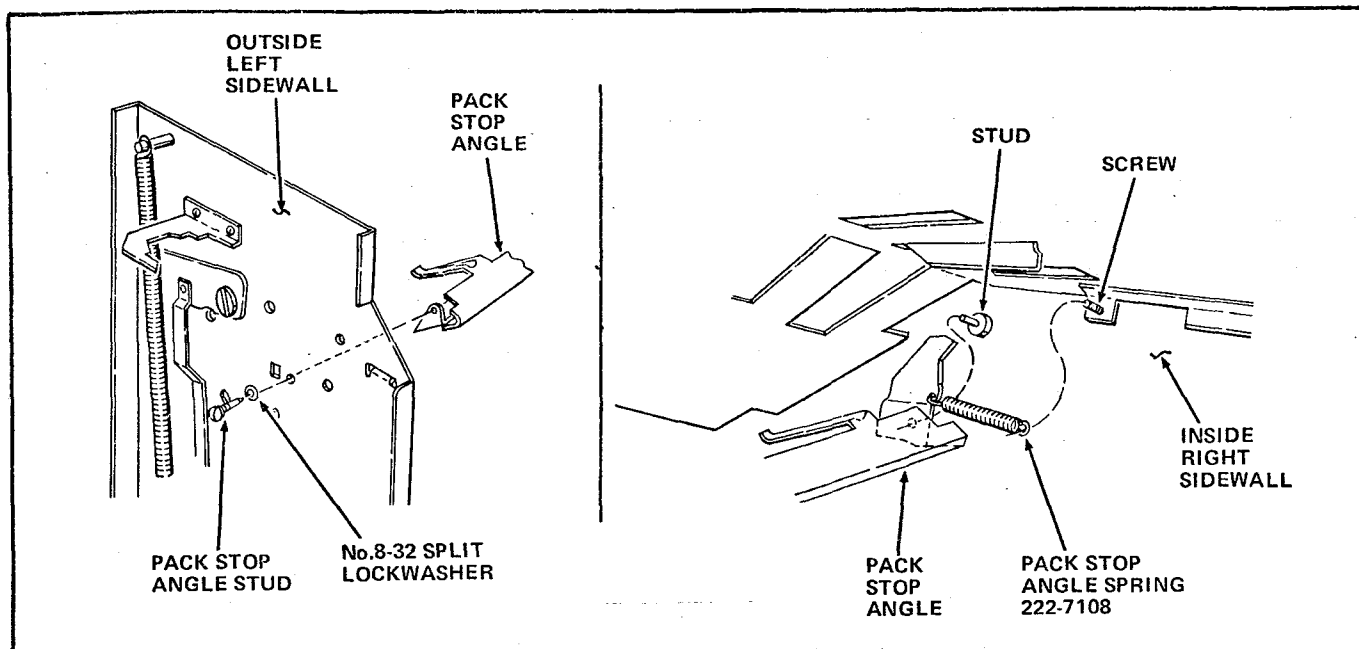


FIGURE 2

9. Remove the Pack Stop Angle Spring from the Pack Stop Angle. See Figure 2.
10. Remove the Upper Delivery Chute Assembly from the rear of the Delivery Mechanism by removing four No.10-32 x 9/32 Round Head Screws with Lockwashers. See Figure 3.
11. Remove four No.10-32 x 9/32 Round Head Screws and four Upper Delivery Chute Studs from the Upper Delivery Chute Assembly. See Figure 3.

B. INSTALLATION OF THE KIT

1. Install the replacement Upper Rear Cross Plate Drawer, Part Number 222-7102, included in the Kit, in the Delivery Mechanism by attaching the Upper Rear Cross Plate Drawer to the Upper Drawer Assembly using four No.8-32 x 1/4 Round Head Self Tapping Screws removed in Step A-6. See Figure 1.
2. Attach one end of the replacement Pack Stop Angle Spring, Part Number 222-7108, included in the Kit, to the spring hole in the end of the Pack Stop Angle removed in Step A-7. See Figure 2.
3. Install the Pack Stop Angle and Pack Stop Angle Spring in the Delivery Mechanism by fitting the small stud on the inside Right Sidewall in the hole in the end of the Pack Stop Angle. Place the other end of the Pack Stop Angle against the Left Sidewall and attach with the Pack Stop Angle Stud and No.8-32 Split Lockwasher removed in Step A-7. See Figure 2.
4. Fit the loose end of the Pack Stop Angle Spring on the Screw coming through the Right Sidewall. See Figure 2.

CAUTION

If the fingers on the Pack Stop Angle have been bent out of tolerance, jamming of cigarette packs and pilferage can occur.

5. Inspect the Pack Stop Angle. The tip of the fingers on the Pack Stop Angle should be within 1/16 inch of the under side of the Apron Assembly. See Figure 4.
6. Bend the fingers if necessary to conform to this tolerance.
7. Install the replacement Upper Delivery Chute Assembly, Part Number 222-6660, on the rear of the Delivery Mechanism and attach with eight No.10-32 x 9/32 Round Head Screws with Lockwashers, Part Number 9900-036 and four Upper Delivery Chute Studs, Part Number 222-6605, all parts included in the Kit. See Figure 3.

NOTE

If installing the Upper Magazine Assembly in a 22M-72 Merchandiser, remove the Magazine Pack Guard from the top of the early model Upper Magazine Assembly and install it on the replacement Upper Magazine Assembly.

8. Install the Lower Magazine in the Delivery Mechanism and attach to the Sidewalls with two No.10-32 x 3/8 Round Head Screws removed in Step A-5.
9. Install the Upper Magazine Assembly, Part Number 222-7100, included in the Kit, in the Delivery Mechanism and attach to the Sidewalls with two No.10-32 x 3/8 Round Head Screws removed in Step A-4.

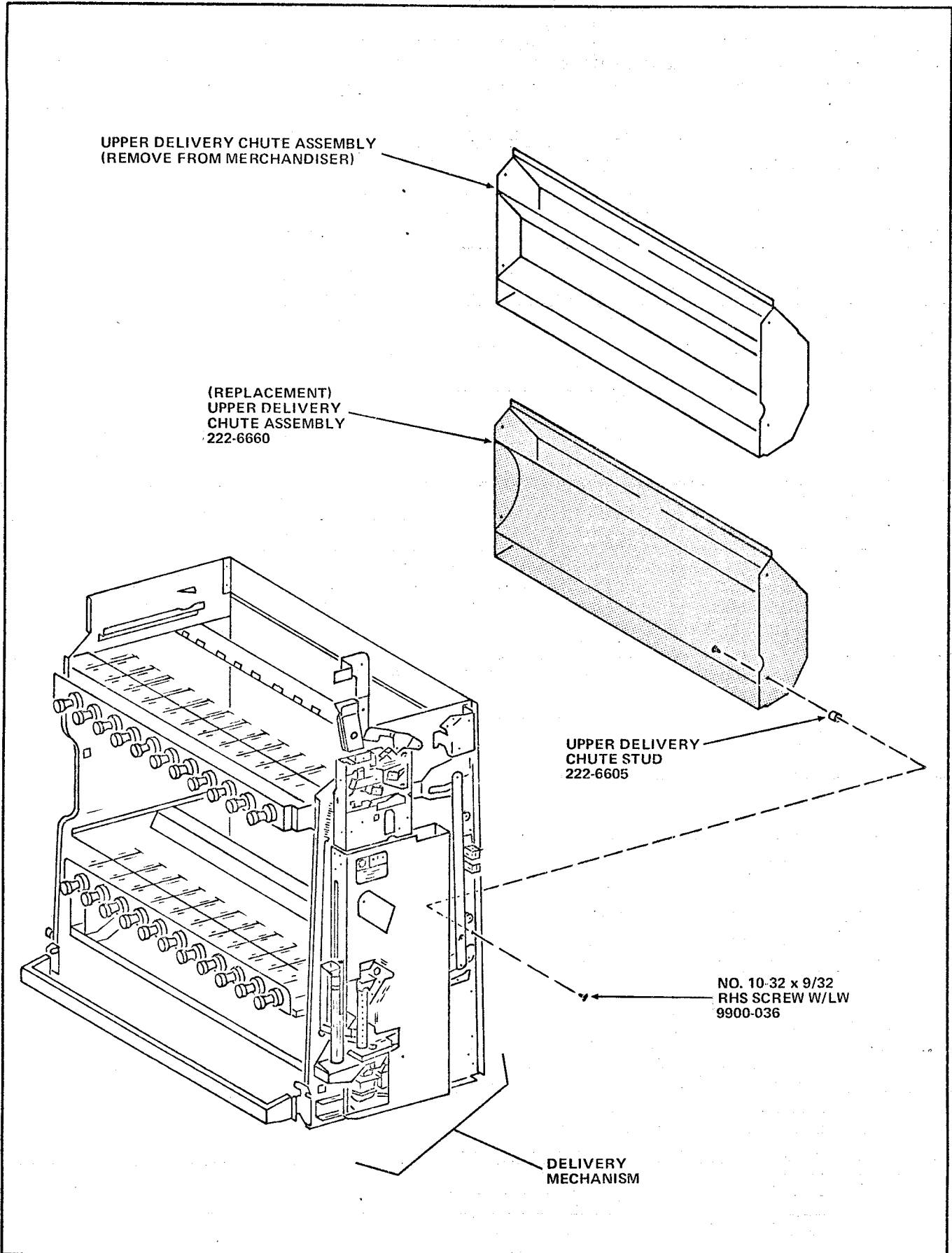


FIGURE 3

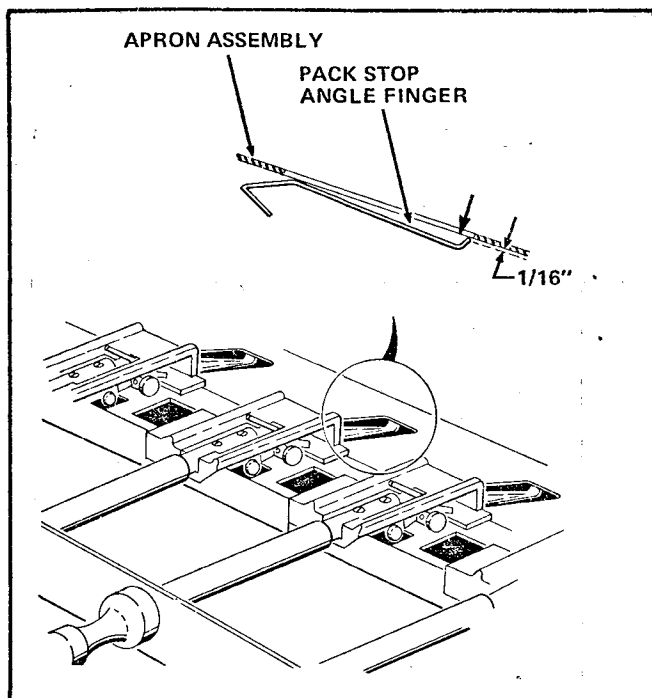


FIGURE 4

WARNING

The Delivery Mechanism is a heavy unit. More than one person will be required to install the Delivery Mechanism in the Merchandiser.

10. Install the Delivery Mechanism in the Merchandiser.

NOTE

Step 11 applies only to Merchandisers equipped with a Book Match Assembly.

11. Center the Roller Guide over the Rollers on the Delivery Mechanism and slide the Book Match Assembly in place.

C. TO LOAD THE UPPER MAGAZINE ASSEMBLY

NOTE

All columns in the Upper Magazine Assembly, included in the Kit, are factory set to vend King-size packs or boxes of cigarettes. The Upper Magazine Assembly will not vend Regulars. Columns 1 and 11 in the Upper Magazine Assembly have the capability of vending only King-size and 100 mm packs or boxes. Columns 2 thru 10 have the capability of vending King-size, 100 and 120 mm packs or boxes. Each column can vend two stacks of King-size and 100 mm packs or boxes, however, only one stack of extra thin 100 or 120 mm packs or boxes can be vended from each column.

Complete loading instructions are given in this section and can be referred to in the event conversions are made at a later date.

TO CONVERT THE UPPER MAGAZINE ASSEMBLY FROM KING-SIZE TO 100 mm PACKS.

1. Open the Magazine Door.

NOTE

Step 2 applies only to Columns 2 thru 10.

2. Move the Conversion Adapter from the outer 85 mm detent position to the inner 100 mm detent position. See Figure 5.

NOTE

Step 3 applies only to Columns 1 and 11.

3. Remove the Spring Clip from the Plate Assembly of the Upper Magazine. See Figure 7.
4. Move the Shift Column Pack Spacer flush against the Shift Column Rear Wall. See Figure 6 View B.

CAUTION

Only one stack of "EXTRA THIN" type 100 mm packs can be vended from each column.

5. Load the Shift Column with the desired brand, tax stamp forward, and to the desired capacity.
6. Push the Shift Column back far enough to make the pack that remains in the Front Column available. Place a finger on the pack and hold the tax stamp end of the pack down.
7. While holding the tax stamp end of the pack down, push the Shift Column all the way back. The pack that remains in the Front Column will hold the Shift Column back to permit loading the Front Column.
8. Load the Front Column with the same brand, tax stamp forward, and to the desired capacity.
9. Close the Magazine Door.

TO CONVERT THE UPPER MAGAZINE ASSEMBLY FROM KING-SIZE TO 120 mm PACKS IN COLUMNS 2 THRU 10.

1. Open the Magazine Door.
2. Remove the Conversion Adapter from the Plate Assembly of the Upper Magazine. See Figure 5.
3. Move the Shift Column Pack Spacer flush against the Shift Column Rear Wall. See Figure 6 View B.
4. Install the Upper Pack Spacer, Part Number 222-7103, included in the Kit, against the Shift Column Rear Wall. See Figure 8.

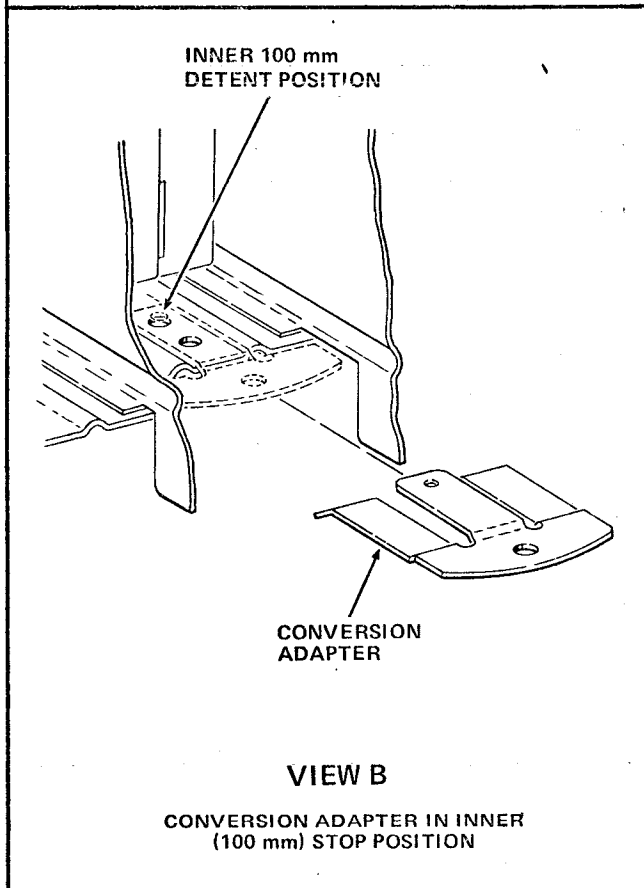
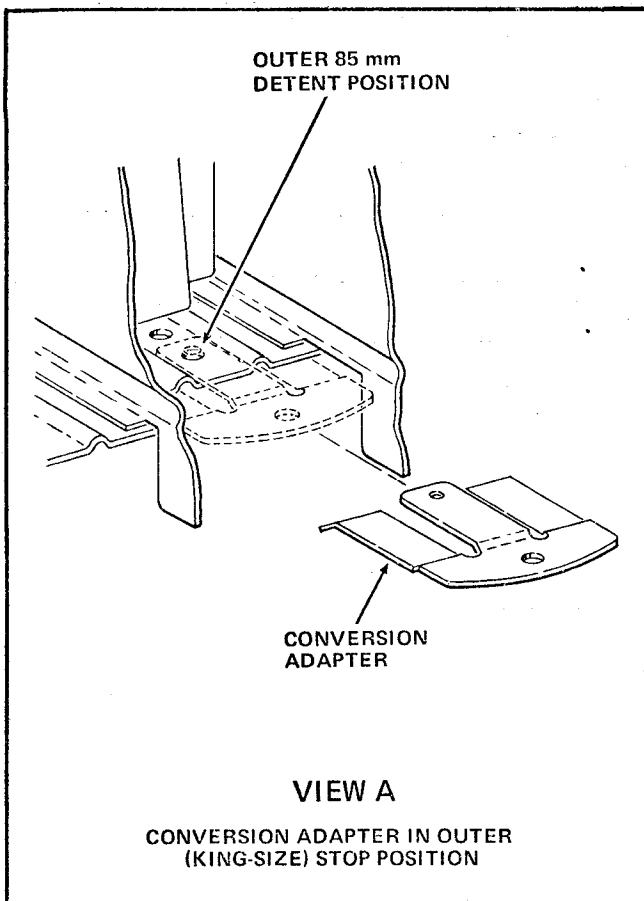


FIGURE 5

5. Bend the Tab on the Upper Magazine Hinge Assembly flush against the hinge. This will prevent the hinge from going into its offset position when the Shift Column is moved back. See Figure 9 View B.

CAUTION

Only one stack of 120 mm packs can be vended from each column.

6. Load the Column with the desired brand, tax stamp forward.
7. Close the Magazine Door.

TO CONVERT THE UPPER MAGAZINE ASSEMBLY FROM 100 mm TO KING-SIZE PACKS.

1. Open the Magazine Door.

NOTE

Step 2 applies only to columns 2 thru 10.

2. Move the Conversion Adapter from the inner 100 mm detent position to the outer 85 mm detent position. See Figure 5.

NOTE

Step 3 applies only to Columns 1 and 11.

3. Install the Spring Clip on the Plate Assembly of the Upper Magazine. See Figure 7.
4. Move the Shift Column Pack Spacer to the King-size pack position - extended position. See Figure 6 View A.
5. Load the Shift Column with the desired brand, tax stamp forward, and to the desired capacity.
6. Push the Shift Column back far enough to make the pack that remains in the Front Column available. Place a finger on the pack and hold the tax stamp end of the pack down.
7. While holding the tax stamp end of the pack down, push the Shift Column all the way back. The pack that remains in the Front Column will hold the Shift Column back to permit loading the Front Column.
8. Load the Front Column with the same brand, tax stamp forward, and to the desired capacity.
9. Close the Magazine Door.

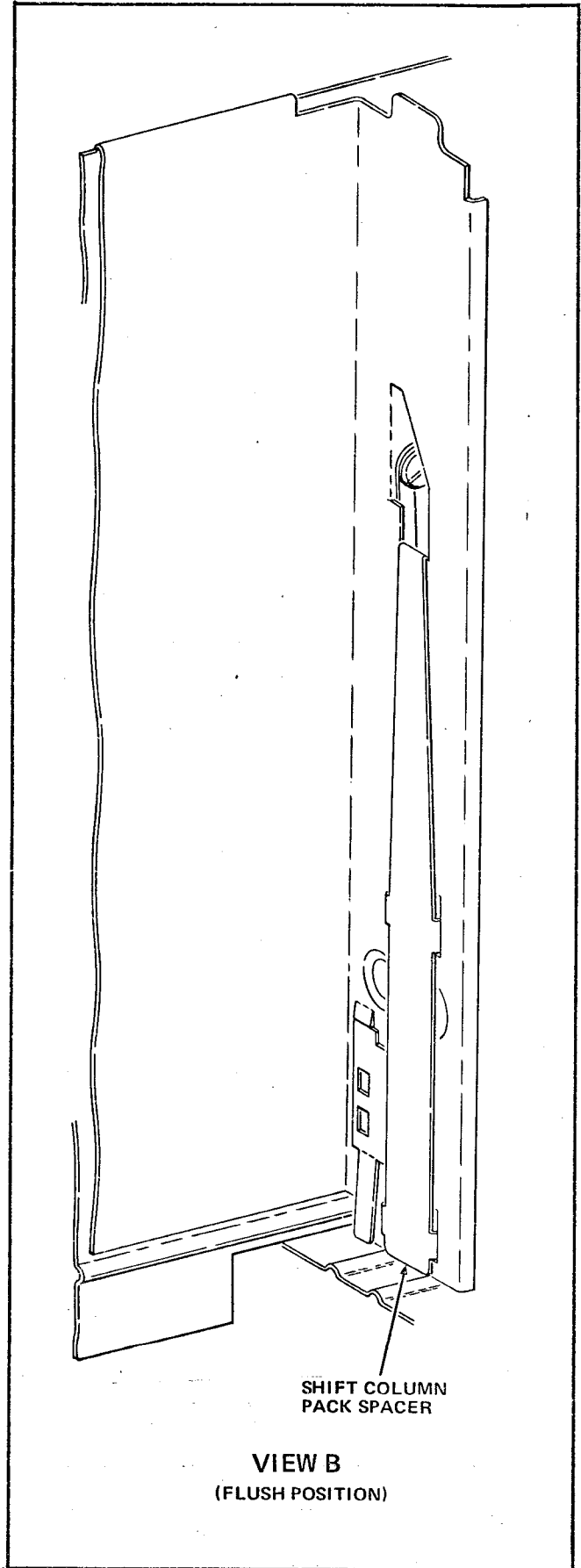
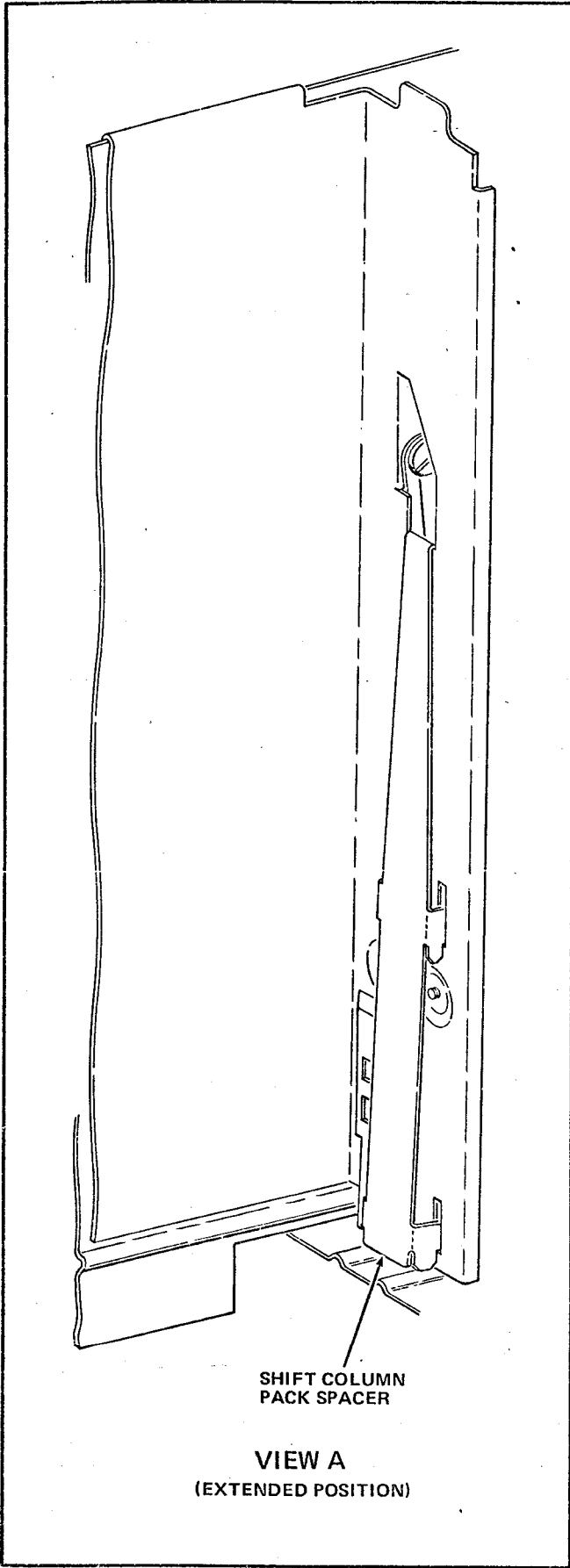


FIGURE 6

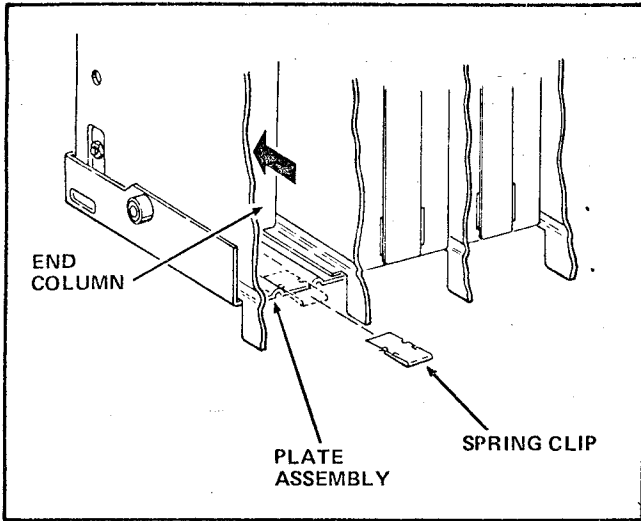


FIGURE 7

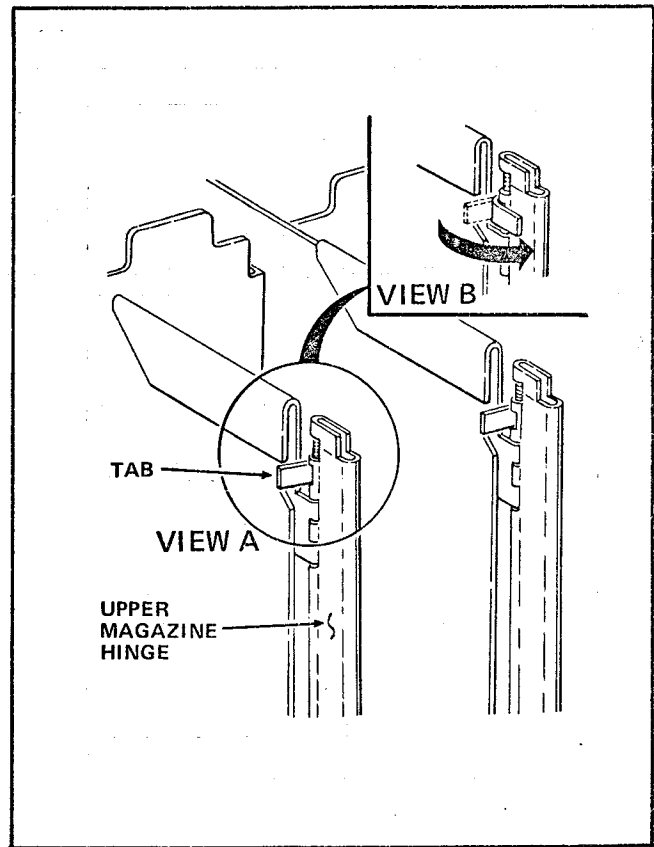
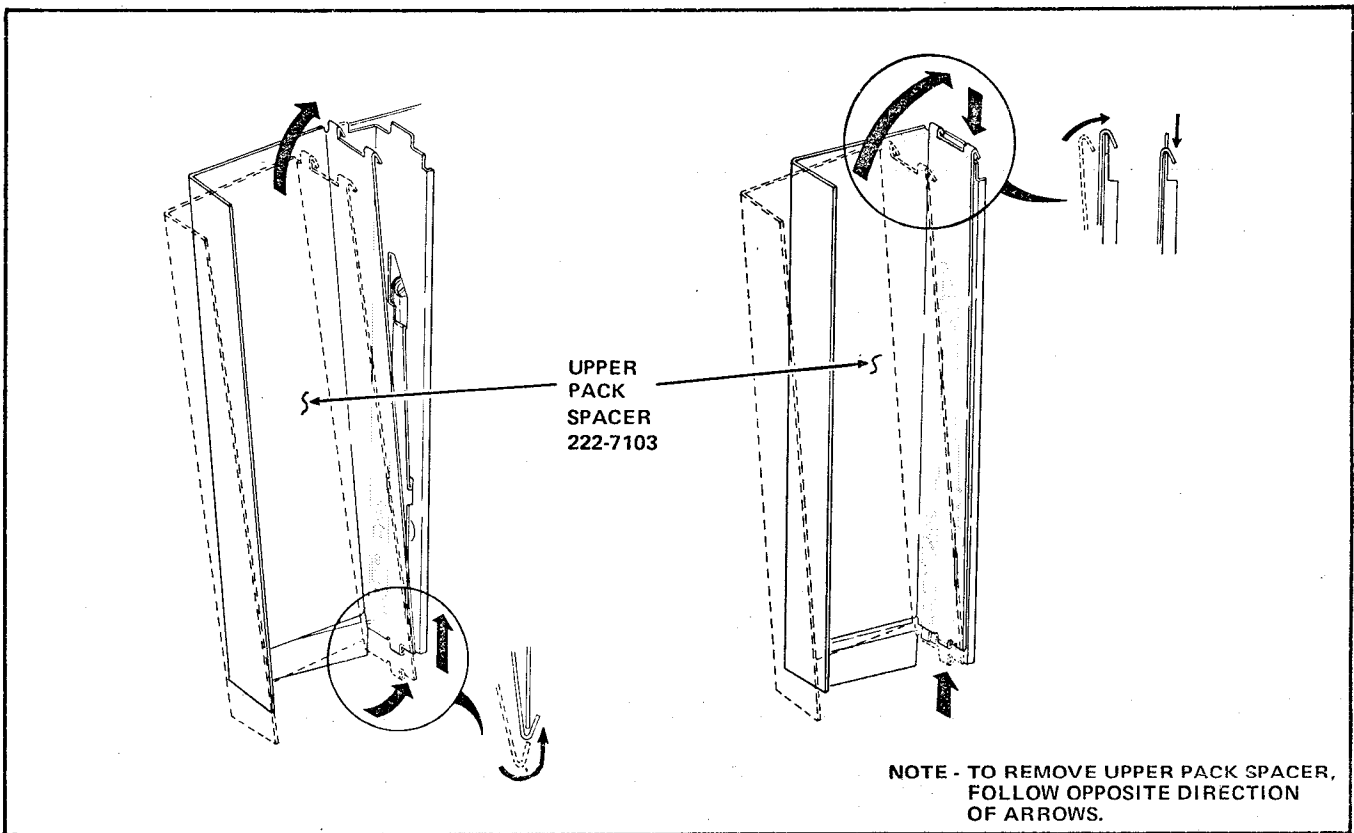


FIGURE 9



NOTE - TO REMOVE UPPER PACK SPACER, FOLLOW OPPOSITE DIRECTION OF ARROWS.

FIGURE 8

TO CONVERT THE UPPER MAGAZINE ASSEMBLY FROM 100 mm TO 120 mm PACKS IN COLUMNS 2 THRU 10.

1. Open the Magazine Door.
2. Remove the Conversion Adapter from the Plate Assembly of the Upper Magazine. See Figure 5.
3. Install the Upper Pack Spacer against the Shift Column Rear Wall. See Figure 8.
4. Bend the Tab on the Upper Magazine Hinge Assembly flush against the hinge. This will prevent the hinge from going into its offset position when the Shift Column is moved back. See Figure 9 View B.

CAUTION

Only one stack of 120 mm packs can be vended from each column.

5. Load the Column with the desired brand, tax stamp forward.
6. Close the Magazine Door.

TO CONVERT THE UPPER MAGAZINE ASSEMBLY FROM 120 mm TO KING-SIZE PACKS IN COLUMNS 2 THRU 10.

1. Open the Magazine Door.
2. Install the Conversion Adapter in the outer 85 mm detent position on the Plate Assembly of the Upper Magazine. See Figure 5 View A.
3. Remove the Upper Pack Spacer from the Shift Column Rear Wall. See Figure 8.
4. Move the Shift Column Pack Spacer to the King-size pack position - extended position. See Figure 6 View A.
5. Bend the Tab on the Upper Magazine Hinge Assembly out - away from the hinge. This will permit the hinge to go into its offset position when the Shift Column is moved back. See Figure 9 View A.
6. Load the Shift Column with the desired brand, tax stamp forward, and to the desired capacity.

7. Push the Shift Column back far enough to make the pack that remains in the Front Column available. Place a finger on the pack and hold the tax stamp end of the pack down.
8. While holding the tax stamp end of the pack down, push the Shift Column all the way back. The pack that remains in the Front Column will hold the Shift Column back to permit loading the Front Column.
9. Load the Front Column with the same brand, tax stamp forward, and to the desired capacity.
10. Close the Magazine Door.

TO CONVERT THE UPPER MAGAZINE ASSEMBLY FROM 120 mm TO 100 mm PACKS IN COLUMNS 2 THRU 10.

1. Open the Magazine Door.
2. Install the Conversion Adapter in the inner 100 mm detent position on the Plate Assembly of the Upper Magazine. See Figure 5 View B.
3. Remove the Upper Pack Spacer from the Shift Column Rear Wall. See Figure 8.
4. Bend the Tab on the Upper Magazine Hinge Assembly out - away from the hinge. This will permit the hinge to go into its offset position when the Shift Column is moved back. See Figure 9 View A.

CAUTION

Only one stack of "EXTRA THIN" type 100 mm packs can be vended from each column.

5. Load the Shift Column with the desired brand, tax stamp forward, and to the desired capacity.
6. Push the Shift Column back far enough to make the pack that remains in the Front Column available. Place a finger on the pack and hold the tax stamp end of the pack down.
7. While holding the tax stamp end of the pack down, push the Shift Column all the way back. The pack that remains in the Front Column will hold the Shift Column back to permit loading the Front Column.
8. Load the Front Column with the same brand, tax stamp forward, and to the desired capacity.
9. Close the Magazine Door.